

MADE IN U.S.A. ③

# INFRARED SERIES



The R3 Infrared Grill provides a broader temperature range (Up to 1,600 degrees to as low as 350 degrees F). This cooking versatility lets you sear steaks, chicken or chops, indirect cook a roast or turkey, and even bake pizza or cookies. Special V-Channel cooking grids over the IR burners help capture the drippings from your food.

## R3 AND R3N

- 695 Sq. In. of Total Cooking Area
- Heavy-Duty Cast Aluminum Construction
- 40,000 BTU
- Two Infrared Burners
- Stainless Steel V-Channel Cooking Grids
- Stainless Steel Control Panel
- Stainless Steel Retract-A-Rack

## R3B AND R3BN

- 695 Sq. In. of Total Cooking Area
- Heavy-Duty Cast Aluminum Construction
- One Infrared Burner and One Blue Flame Burner
  - 20,000 BTU Infrared Burner
  - 20,000 BTU Blue Flame Burner (18,000 BTU on Propane)
- One Stainless Steel V-Channel Cooking Grid and One Multi-level Stainless Steel Cooking Grid
- Stainless Steel Control Panel
- Stainless Steel Retract-A-Rack



# BUILD YOUR GRILL

## MOUNTING OPTIONS:

**PCB-1 CART**



Stainless Steel Cart

**DCB-1 CART**



Black Painted Steel Cart

**PSCB-1 CART**



Stainless Steel Storage Cart  
(P3X and H3X Only)

**PACKAGE CART**



Painted Steel Cart  
(Packages Only)

**SS48-G**



Stainless Steel  
In-ground Post

**BL48-G**



Painted Steel  
In-ground Post

**SS26-P**



Stainless Steel Patio Post  
with Cast Iron Base

**BL26-P**



Painted Steel Patio Post  
with Cast Iron Base

## SIDE & FRONT SHELF OPTIONS:

**SKFPB2**



Black Solid Surface Side Shelf  
(Painted Support)

**SKFB2**



Black Solid Surface Side Shelf  
(Stainless Steel Support)

**SKSS2**



Stainless Steel Side Shelf  
(Stationary)

**DPA 153**



Stainless Steel  
Drop Down Shelf

**FKBLACK**



Black Composite Surface  
Front Shelf\*

**FKSS**



Stainless Steel  
Front Shelf\*

\*Installing a front shelf with a PSCB-1 cart may limit access to cart interior.

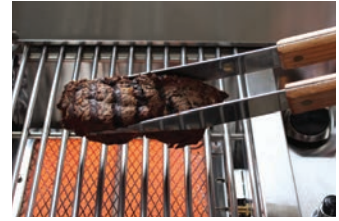
# ACCESSORIZE



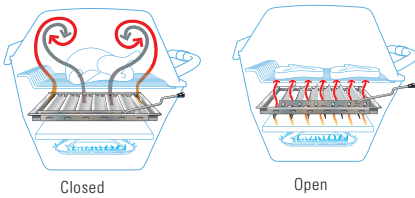
GRILL COVER



STAINLESS STEEL SIDE BURNER



STAINLESS STEEL INFRARED BURNER



Closed

Open

SMOKER SHUTTER



SMOKER BOX



STAINLESS STEEL GRIDDLE

# BUILT-IN GRILLS



In addition to carts and posts, Broilmaster offers a stainless steel surround that lets you install any P3, H3, Q3, R3 or C3 grill into an island of your own design. Complete your outdoor kitchen with stainless steel doors, drop-in side burner, tilt-out Propane caddy (or can hold a small waste container), and even matching stainless steel registers (required for Propane installations).

**BROILMASTER WARRANTY**

LIMITED LIFETIME Against Rust-through	Aluminum Grill Housing (except paint), Stainless Steel Cooking Grids and Stainless Steel Griddles, Select Stainless Steel Components – Cart, Mounting, Bow Tie Burner, Side Burner (DPA150), Side Burner (DPA151), Side Shelf (DPA153), and Warming Rack, Stainless Steel Built-In Components – Built-In Kits for 3-Series Grill Heads, Side Burner Surround (DPA152), Door Kit, Tilt-Out LP Tank Door, and Vent Register Kit
10 YEARS Against Rust-through	Stainless Steel Burners for H-Series and R3B
5 YEARS Against Rust-through	Infrared Burners on R3 and R3B, and Side Burner (DPA151), Flare Buster™ Ceramic Flavor Enhancers, Painted Electro-Galvanized Steel Components, Stainless Steel Smoker Shutter
2 YEARS Against Rust-through	Porcelain Coated Steel Briquet Racks, Chrome-Plated Warming Rack, Stainless Steel Flavor Screen, Stainless Steel Heat Shield
1 YEAR Against Rust-through	Valves, knobs, ignitors, labels, hoses, fittings, grease cups, drip buckets, and all other parts and accessories – including those made from stainless steel – unless specified above, paint on aluminum grill head



A Registered Trademark of Empire Comfort Systems Inc.  
918 Freeburg Avenue Belleville, Illinois 62220-2623

[www.broilmaster.com](http://www.broilmaster.com)

BRM-00058 3/15/19